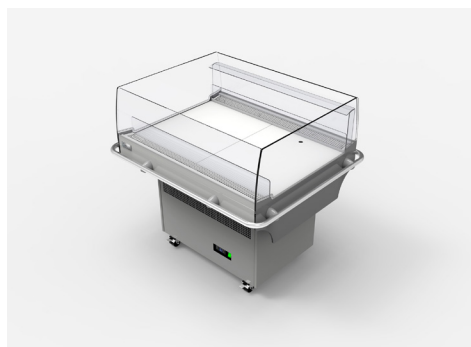




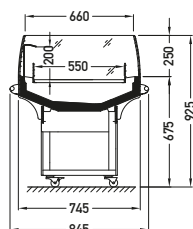
PLUG-IN → PROMOTION

Fiji **LDFI-07**

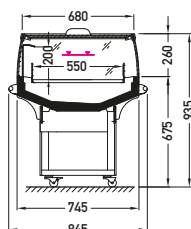
JBG 2



Cross sections:



LDFI-07 BCA



LDFI-07 CSS

BCA – low glass or front glass riser | single, bent | fixed
CSS – cover | single, straight | sliding (sideways)



Modules:

0700 0900



Temperature class:

BCA 3M2
CSS 3M1



Refrigerant:

R290



Standard features:

- working temperature:
CSS from 0°C to +2°C; BCA from +2°C do +4°C
- natural defrosting
- automatic evaporation of condensate
- electronic controller with temperature indicator
- **energy saving fans**
- exposition: zinc-plated steel, powder painted in white (RAL 9003)
- ø25 inox bumper
- base colour: black (RAL 9005)
- sidewalls – glass with black/grey silk screen painting
- on wheels